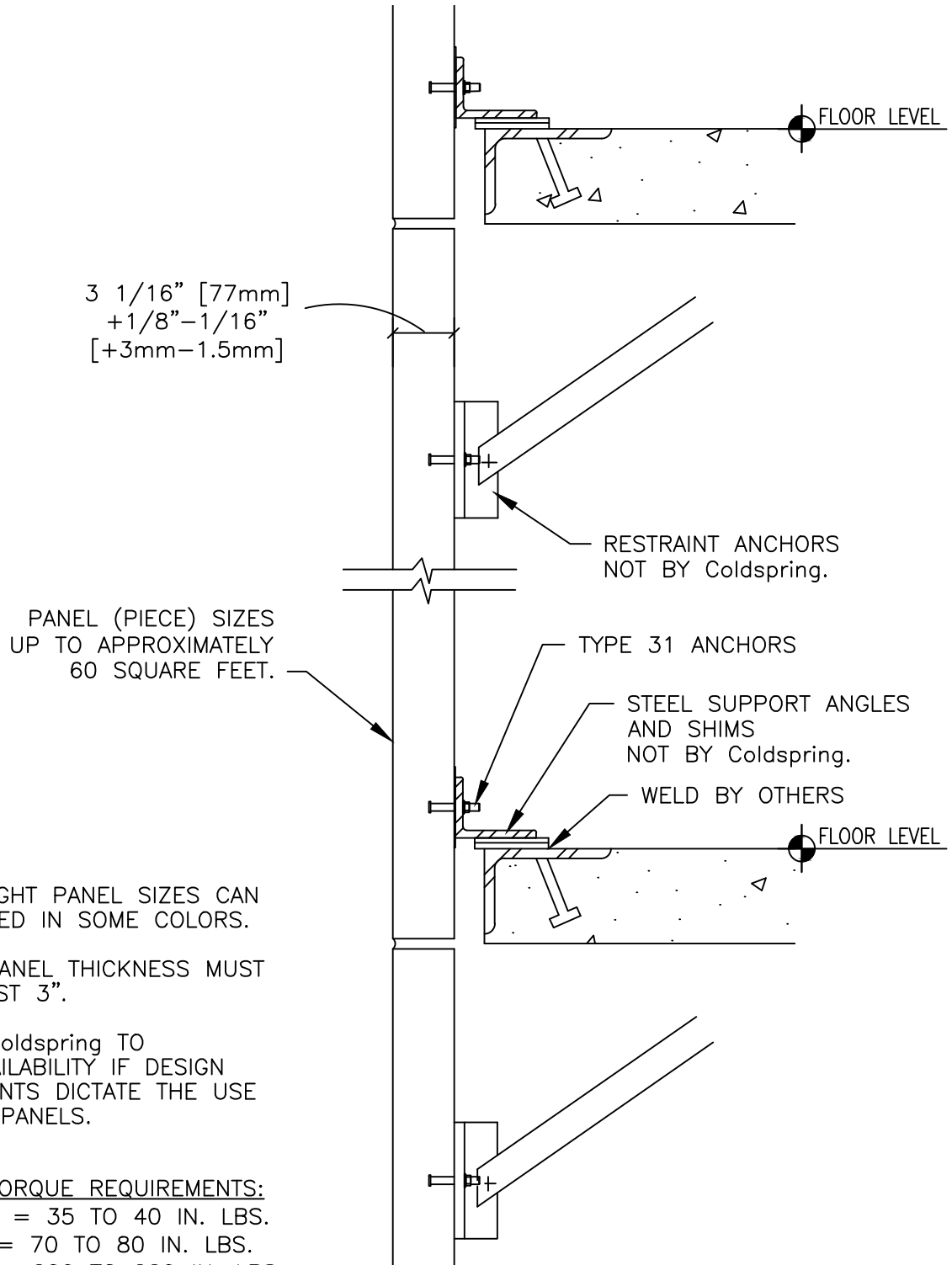


ANCHORING DETAILS ARE FOR REFERENCE ONLY. FINAL SPECIFICATIONS AND DETAILS SHOULD BE APPROVED BY A LICENSED ENGINEER.



3 1/16" [77mm]
+1/8"-1/16"
[+3mm-1.5mm]

PANEL (PIECE) SIZES
UP TO APPROXIMATELY
60 SQUARE FEET.

FLOOR HEIGHT PANEL SIZES CAN
BE QUARRIED IN SOME COLORS.

NOMINAL PANEL THICKNESS MUST
BE AT LEAST 3".

CONTACT Coldspring TO
CHECK AVAILABILITY IF DESIGN
REQUIREMENTS DICTATE THE USE
OF LARGE PANELS.

TYPE 31 TORQUE REQUIREMENTS:
3/16" DIA. = 35 TO 40 IN. LBS.
1/4" DIA. = 70 TO 80 IN. LBS.
3/8" DIA. = 200 TO 220 IN. LBS
1/2" DIA. = 400 IN. LBS

SECTION

DESCRIPTION:
STONE FACING WITH CLIP ANGLES AND EMBEDS
75mm

SCALE:
1 1/2" = 1'-0"

DRAWN BY:
LB/KM

DATE:
4-2-2020



COLDSRING™
17482 GRANITE WEST ROAD, COLD SPRING, MN 56320-4578
PHONE (320) 685-3621, FAX (320) 685-5052
WWW.COLDSRINGUSA.COM